



STONE

MATTER & SLIM

techporcelain



INDEX

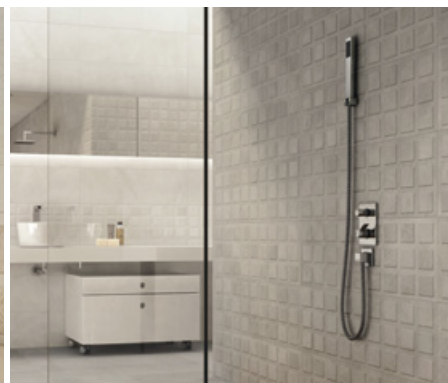
MATTER&SLIM

| | |
|-----------------------------|----|
| MATTER slim | 04 |
| TECHNICAL CHARACTERISTICS | 10 |
| MATTER II mm | 12 |
| TECHNICAL CHARACTERISTICS | 18 |
| SPECIAL PIECES 3Dimensional | 19 |
| STEPS | 20 |
| ECOLOGICAL BALANCE | 21 |

MATTER SLIM



STONE



FORMATS. FORMATOS



30X90 natural
29.75x89.46 cm - 11.71"x35.22"



30X90 square
29.75x89.46 cm - 11.71"x35.22"

SPECIAL PIECES. PIEZAS ESPECIALES



30X90 square titanium
29.75x89.46 cm - 11.71"x35.22"



30X30 mosaico 2,5x2,5
29.75x29.75 cm - 11.71"x11.71"

THICKNESS. ESPESOR

— 4,8 cm / 1.89" aprox.

30x90 cm FORMAT

COLOURS COLORES



ivory



grey

FINISHES ACABADOS



natural

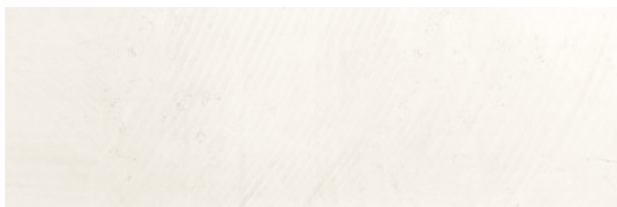


square

MATTER SLIM

MATTER SLIM ivory

PLAIN TILES.BASES



Matter slim ivory natural

29,75 x 89,46 cm - 11.71" x 35.22"

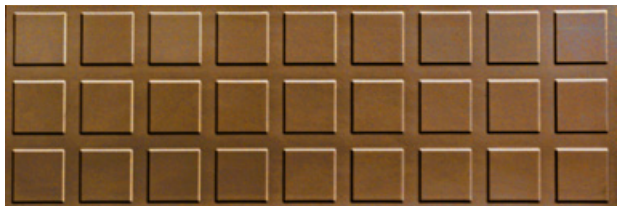
G-6224



Matter slim ivory square

29,75 x 89,46 cm - 11.71" x 35.22"

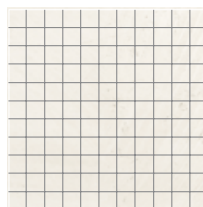
G-6246



Square slim titanium

29,75 x 89,46 cm - 11.71" x 35.22"

SPECIAL PIECES. PIEZAS ESPECIALES



**Matter slim ivory natural
mosaico 2,5x2,5**

29,75 x 29,75 cm - 11.71" x 11.71"

G-6756

COMPLEMENTS.COMPLEMENTOS



Fusion graffiato lista 90

1,5 x 89,46 cm - 0.59" x 35.22"



G-5091



Fusion brillo lista 90

1,5 x 89,46 cm - 0.59" x 35.22"



G-5091

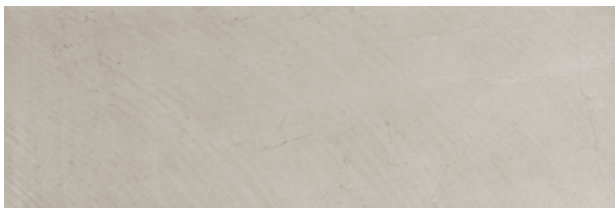


MATTER SLIM

wall: Matter slim ivory square - grey natural 29,75x89,46 cm **floor:** Matter grey lappato 59,55x59,55 cm

MATTER SLIM grey

PLAIN TILES.BASES



Matter slim grey natural

29,75 x 89,46 cm - 11.71" x 35.22"

G-6224

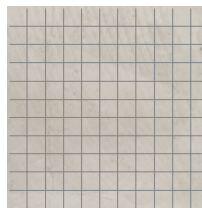


Matter slim grey square

29,75 x 89,46 cm - 11.71" x 35.22"

G-6246

SPECIAL PIECES. PIEZAS ESPECIALES



Matter slim grey natural mosaico 2,5x2,5

29,75 x 29,75 cm - 11.71" x 11.71"

G-6756

COMPLEMENTS.COMPLEMENTOS

Fusion graffiato lista 90

1,5 x 89,46 cm - 0.59" x 35.22"



G-5091

Fusion brillo lista 90

1,5 x 89,46 cm - 0.59" x 35.22"




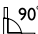




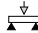






G-5091



MATTER SLIM

wall: Matter slim ivory natural - ivory square - grey square 29,75x89,46 cm floor: Matter grey natural 59,55x119,3_29,67x119,3_14,73x119,3 cm

TECHNICAL CHARACTERISTICS. CARATTERÍSTICAS TÉCNICAS

| MEASUREMENTS AND SURFACES APPEARANCE MEDIDAS Y ASPECTO SUPERFICIAL | | STANDARD TEST METHOD STANDARD TEST METHOD | STANDARD PRESCRIBED VALUES STANDARDWERTE | Matter Slim * |
|--|---|--|--|--|
|  | Length and width. <i>Lunghezza e larghezza.</i> Longitud y anchura. Länge und Breite | ISO 10545-2 | ± 0,6% max. | ± 0,2% |
|  | Orthogonality. <i>Ortogonalità.</i> Ortogonalidad. Rechtwinkligkeit | ISO 10545-2 | ± 0,6% max. | ± 0,2% |
|  | Straightness of sides. <i>Rettilineità dei lati.</i> Rectitud de lados. Kantengeradigkeit | ISO 10545-2 | ± 0,5% max. | ± 0,2% |
|  | Surfaces flatness. <i>Planarità.</i> Planitud. Ebenföchigkeit | ISO 10545-2 | ± 0,5% max. | ± 0,2% |
| PHYSICAL PROPERTIES / PROPIEDADES FÍSICAS | | | | |
|  | Water absorption. <i>Assorbimento d'acqua.</i> Absorción de agua. Wasseraufnahme | ISO 10545-3 | ≤ 0,5% | 0,1% |
|  | Breaking strength, in N. <i>Carico di rottura, en N.</i> Carga de rotura, en N. Bruchlast, in N | ISO 10545-4 | ≥ 700 N | Available Method * Metodo Disponible Método Disponible |
|  | Modulus of rupture <i>Resistenza alla flessione.</i> Resistencia a la flexión. Biegefestigkeit | ISO 10545-4 | ≥ 35 N/mm ² | >40 N/mm ² * |
|  | Resistance to thermal shock. <i>Resistenza agli sbalzi termici.</i> Resistencia al choque térmico. Temperaturwechselbeständigkeit | ISO 10545-9 | No surface defects should be visible <i>Non deve presentarsi difetti visibili</i> No debe presentar defectos superficiales visibles | Resistant, Resistente, Resistente |
|  | Frost resistance. <i>Resistenza al gelo.</i> Resistencia a la helada. Frostbeständigkeit | ISO 10545-12 | No surface defects or cracks should be visible <i>Non deve presentarsi difetti visibili</i> No debe presentar defectos ni grietas superficiales visibles | Frost Resistant <i>Resistente a la Helada</i> |
|  | Coefficient of friction. <i>Resistenza allo scivolamento.</i> Coeficiente de fricción. Rutschfestigkeit | DIN 51130 | | Available Method Metodo Disponible Método Disponible |
|  | Colour resistance to light. <i>Resistenza dei colori alla luce.</i> Resistencia del color a la luz. Lichtbeständigkeit der Farben | DIN 51094 | There should be no colour variations <i>Non deve presentarsi variazioni cromatiche</i> No debe presentar variaciones de color | No alterations in colour and shine <i>Non presenta alterazioni di colore ni lucentezza</i> No presenta variaciones de color y brillo |
| CHEMICAL PROPERTIES / PROPIEDADES QUÍMICAS | | | | |
|  | Chemical resistance. <i>Resistenza agli agenti chimici.</i> Resistencia química. Chemikalienbeständigkeit | ISO 10545-13 | Resistance to household cleaning products and swimmingpools salts. <i>Resistenza a prodotti domestici e sales per piscine</i> | Min. UB |
|  | Resistance to staining. <i>Resistenza alle macchie.</i> Resistencia a las manchas. Fleckenbeständigkeit | ISO 10545-14 | ≥ 3 | 5 |

*The Land values are the average of different production consignments. For further detail information, please check with our commercial network. /

Los valores declarados son el promedio obtenido a través de ensayos de diferentes producciones. Para la obtención de una información detallada consultar a la red comercial.



MATTER SLIM

wall: Matter slim ivory natural - ivory square 29,75x89,46 cm

MATTER



class 2 lappato



STONE



FORMATS. FORMATOS



60X120
59,55x119,3 cm - 23.45"x46.97"



30X120
29,67x119,3 cm - 11.68"x46.97"



15X120
14,73x119,3 cm - 5.80"x46.97"



60X60
59,55x59,55 cm - 23.45"x23.45"

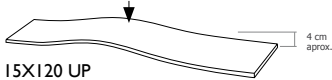


30X60
29,75x59,55 cm - 11.71"x23.45"

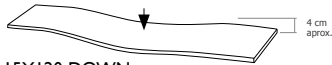


7,5X60
7,3x59,55 cm - 2.87"x23.45"

SPECIAL PIECES. PIEZAS ESPECIALES



15X120 UP
14,74x118,80 cm - 5.80"x46.77"



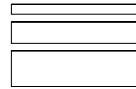
15X120 DOWN
14,74x119,3 cm - 5.80"x46.77"



30X30 mosaico 3,5x3,5
29,75x29,75 cm - 11.71"x11.71"

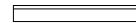


30X30 mosaico 3D 3,5x10
29,75x29,75 cm - 11.71"x11.71"



**15X60 - 10X60 - 5X60
multiformat natural[®]**
14,75x59,55 cm - 5.87"x23.45"
9,72x59,55 cm - 3.83"x 23.45"
4,84x59,55 cm - 1.90"x23.45"

**The box contains 5 pieces from each of the formats.
cada caja contiene 5 piezas de cada formato.*



7,5X60 rodapié
7,3x59,55 cm - 2.87"x23.45"

THICKNESS. ESPESOR

≡ 1,16 cm / 0.47" aprox.

≡ 0,98 cm / 0.38" aprox.

60x120 cm FORMAT

60x60 cm / 30x60 cm FORMATS

COLOURS COLORES



ivory



grey

FINISHES ACABADOS



natural



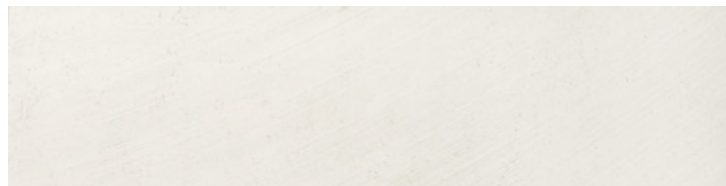
lappato

MATTER ivory

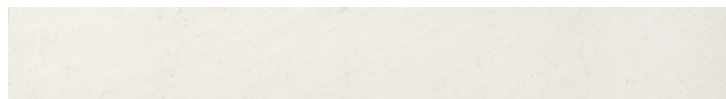
PLAIN TILES.BASES



Matter ivory natural
59,55 x 119,3 cm - 23.45" x 46.97"
G-6506



Matter ivory natural
29,67 x 119,3 cm - 11.68" x 46.97"
G-6544



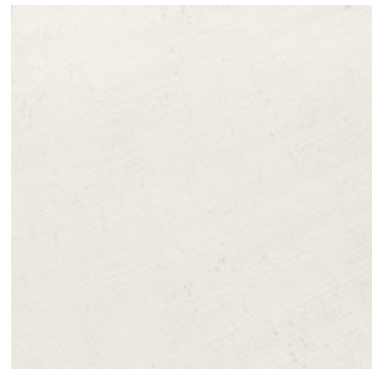
Matter ivory natural
14,73 x 119,3 cm - 5.80" x 46.97"
G-6584

Matter lappato

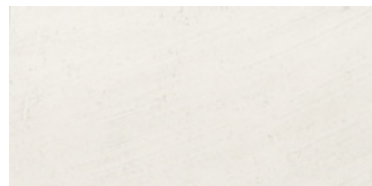
CLASE 2
UNE - ENV 12633

Matter natural

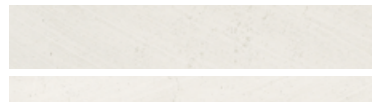
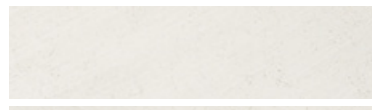
CLASE 1
UNE - ENV 12633



Matter ivory natural / lappato
59,55 x 59,55 cm - 23.45" x 23.45"
G-6286 / G-6330



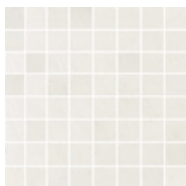
Matter ivory natural
29,75 x 59,55 cm - 11.71" x 23.45"
G-6218



Matter ivory natural multiformat 15x60-10x60-5x60*
14,75x59,55 cm - 5.87"x23.45" / 9,72x59,55 cm - 3.83"x 23.45" /
4,84x59,55 cm - 1.90"x23.45"
G-6298

**The box contains 5 pieces from each of the formats.
cada caja contiene 5 piezas de cada formato.*

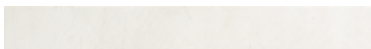
SPECIAL PIECES.
PIEZAS ESPECIALES



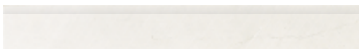
**Matter ivory natural
mosaico 3,5x3,5**
29,75 x 29,75 cm - 11.71" x 11.71"
G-6756



**Matter ivory natural
mosaico 3D 3,5x10**
29,75 x 29,75 cm - 11.71" x 11.71"
G-5187



Matter ivory natural / lappato listelo
7,3 x 59,55 cm - 2.87" x 23.45"
G-5087 / G-5091



Matter ivory natural rodapié 60
7,3 x 59,55 cm - 2.87" x 23.45"
G-5097



Matter ivory natural 59,55x59,55 cm

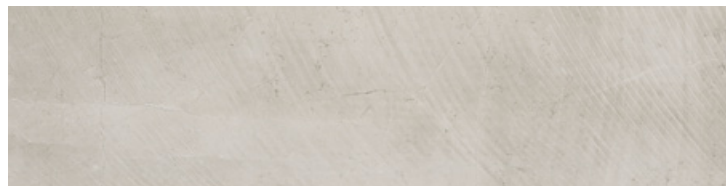
MATTER

MATTER grey

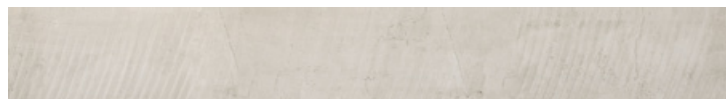
PLAIN TILES.BASES



Matter grey natural
59,55 x 119,3 cm - 23.45" x 46.97"
G-6506



Matter grey natural
29,67 x 119,3 cm - 11.68" x 46.97"
G-6544



Matter grey natural
14,73 x 119,3 cm - 5.80" x 46.97"
G-6584

**Matter
lappato**

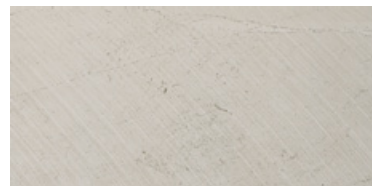
CLASE 2
UNE - ENV 12633

**Matter
natural**

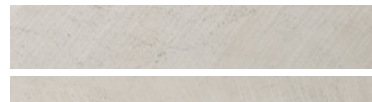
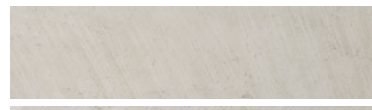
CLASE 1
UNE - ENV 12633



Matter grey natural / lappato
59,55 x 59,55 cm - 23.45" x 23.45"
G-6286 / G-6330



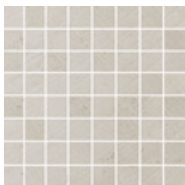
Matter grey natural
29,75 x 59,55 cm - 11.71" x 23.45"
G-6218



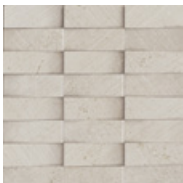
Matter grey natural multiformat 15x60-10x60-5x60*
14,75x59,55 cm - 5.87"x23.45" / 9,72x59,55 cm - 3.83"x 23.45" /
4,84x59,55 cm - 1.90"x23.45"
G-6298

**The box contains 5 pieces from each of the formats.
cada caja contiene 5 piezas de cada formato.*

SPECIAL PIECES.
PIEZAS ESPECIALES



**Matter grey natural
mosaico 3,5x3,5**
29,75 x 29,75 cm - 11.71" x 11.71"
G-6756



**Matter grey natural
mosaico 3D 3,5x10**
29,75 x 29,75 cm - 11.71" x 11.71"
G-5187



Matter grey natural / lappato listelo
7,3 x 59,55 cm - 2.87" x 23.45"
G-5087 / G-5091



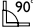

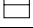












Matter grey natural rodapié 60
7,3 x 59,55 cm - 2.87" x 23.45"
G-5097



Matter grey natural 59,55x119,3 cm

TECHNICAL CHARACTERISTICS. CARATTERISTICHE TECNICHE

| MEASUREMENTS AND SURFACES APPEARANCE / DIMENSIONI E ASPETTO SUPERFICIALE / MEDIDAS Y ASPECTO SUPERFICIAL / MASSEN UND AUSSEHEN DER OBERFLÄCHE | | STANDARD TEST METHOD METODO DELLA NORMA MÉTODO DE ENSAYO STANDARD TEST METHOD | STANDARD PRESCRIBED VALUES VALORI PRESCRITTI VALORES STANDARD NORMA STANDARDWERTE | MATTER collection * |
|---|---|--|---|--|
|  Length and width. <i>Lunghezza e larghezza.</i> Longitud y anchura. Länge und Breite | | ISO 10545-2 | ± 0,6% max. | ± 0,1% |
|  Thickness. <i>Spessore.</i> Grosor. Stärke | | ISO 10545-2 | ± 5% max. | ± 2% |
|  Orthogonality. <i>Ortogonalità.</i> Ortogonalidad. Rechtwinkligkeit | | ISO 10545-2 | ± 0,6% max. | ± 0,2% |
|  Straightness of sides. <i>Rettilineità dei lati.</i> Rectitud de lados. Kantengeradigkeit | | ISO 10545-2 | ± 0,5% max. | ± 0,2% |
|  Surfaces flatness. <i>Planarità.</i> Planitud. Ebenflächigkeit | | ISO 10545-2 | ± 0,5% max. | ± 0,2% |
| PHYSICAL PROPERTIES / PROPIETÀ FISICHE / PROPIEDADES FÍSICAS / PHYSIKALISCHE EIGENSCHAFTEN | | | | |
|  Water absorption. <i>Absorbimento d'acqua.</i> Absorción de agua. Wasseraufnahme | | ISO 10545-3 | ≤ 0,5% | ≤ 0,1% |
|  Breaking strength, in N. <i>Carico di rottura, in N.</i> Carga de rotura, in N. Bruchlast, in N | thickness > 7.5 mm spessore > 7.5 mm gruesor > 7.5 mm | ISO 10545-4 | ≥ 1300 N | 2400 N * |
|  Modulus of rupture. <i>Resistenza alla flessione.</i> Resistencia a la flexión. Biegefestigkeit | | ISO 10545-4 | ≥ 35 N/mm ² | 56 N/mm ² * |
|  Resistance to deep abrasion. <i>Resistenza all'abrasione profonda.</i> Resistencia a la abrasión profunda. Tiefverschleissbeständigkeit | | ISO 10545-6 | ≤ 175 mm ³ | 115 mm ³ * |
|  Resistance to thermal shock. <i>Resistenza agli sbalzi termici.</i> Resistencia al choque térmico. Temperaturwechselbeständigkeit | | ISO 10545-9 | No surface defects should be visible Non deve presentarsi difetti visibili No debe presentar defectos superficiales visibles | Resistant. <i>Resistente. Resistente</i> |
|  Frost resistance. <i>Resistenza al gelo.</i> Resistencia a la helada. Frostbeständigkeit | | ISO 10545-12 | No surface defects or cracks should be visible Non deve presentarsi difetti visibili No debe presentar defectos ni grietas superficiales visibles | Frost resistant <i>Antigranizo</i> Resistente a la Helada |
|  Coefficient of friction. <i>Resistenza allo scivolamento.</i> Coeficiente de fricción. Rutschfestigkeit | | DIN 51130 UNE - ENV 12633 | WET TEST/ENSAYO EN HÚMEDO DRY TEST/ENSAYO EN SECO | R9** Clase 1** - Clase 2*** Clase 3**** |
|  Colour resistance to light. <i>Resistenza dei colori alla luce.</i> Resistencia del color a la luz. Lichtbeständigkeit der Farben | | DIN 51094 | There should be no colour variations Non deve presentarsi difetti visibili No debe presentar variaciones de color | No alterations in colour and shine Non presenta alterazioni di colore e lucido No presenta variaciones de color y brillo |
| CHEMICAL PROPERTIES / PROPIETÀ CHIMICHE / PROPIEDADES QUÍMICAS / CHEMISCHEN EIGENSCHAFTEN | | | | |
|  Chemical resistance. <i>Resistenza agli agenti chimici.</i> Resistencia química. Chemikalienbeständigkeit | | ISO 10545-13 | Resistance to household cleaning products and swimmingpools salts <i>Resistencia a productos de limpieza y sales para piscinas</i> | Min. UB |
|  Resistance to staining. <i>Resistenza alle macchie.</i> Resistencia a las manchas. Fleckenbeständigkeit | | ISO 10545-14 | ≥ 3 | 5 |

*The Load values are the average of different production consignments. For further detail information, please check with our commercial network. / I valori dichiarati sono ottenuti da una media di prove effettuate su diverse produzioni. Per avere informazioni dettagliate consultare la rete commerciale. / Los valores declarados son el promedio obtenido a través de ensayos de diferentes producciones. Para la obtención de una información detallada consultar a la red comercial.

** R9 Test carried out on Matter Grey Natural 60x60 (Batch 17-10-12). Ensayo realizado sobre el producto Matter Grey Natural 60x60 (Lote 17-10-12)

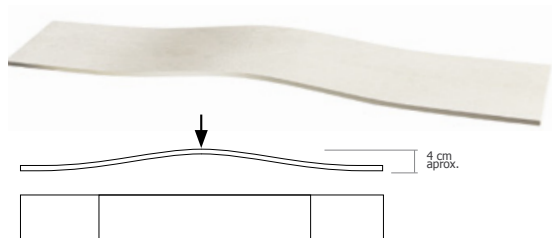
** Clase 1 - Tested in natural finish (It depends on the consignment). Test realized in internal laboratory / Provalo realizzato in laboratorio interno / Ensayo realizado en laboratorio interno.

** Clase 2 - Tested in lappato finish (It depends on the consignment) Test realized in internal laboratory / Provalo realizzato in laboratorio interno / Ensayo realizado en laboratorio interno.

*** Dry Test, according to document DA DB-SUA/3 (Código Técnico de la Edificación) M° de Fomento. Average test result value, on May 2012.
Ensayo realizado, según documento DA DB-SUA/3 (Código Técnico de la edificación) M° de Fomento. Valor medio a fecha Mayo 2012.

SPECIAL PIECES. PIEZAS ESPECIALES

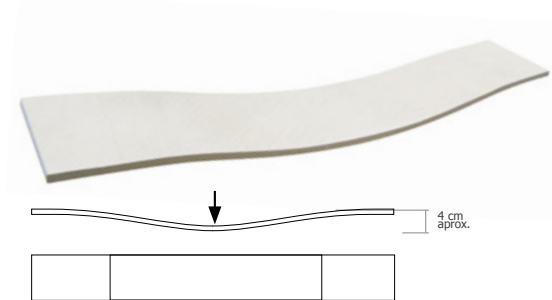
3Ddimensional



UP
14,73x118,80 cm - 5.80"x46.77"

- Matter Up 14,73x118,80 cm

G-5435



DOWN
14,73x118,80 cm - 5.80"x46.77"

- Matter Down 14,73x118,80 cm

G-5435

* available in all colours from Matter collection.
disponible en todos los colores de la colección Matter.

This is a natural product made through a handmade process, therefore, its possible shade or size variations must be considered as typical features of the material and they will not be admitted in a claim.

Este es un producto natural fabricado artesanalmente, por lo que posibles variaciones de tono o dimensión deben considerarse propias del material y no será objeto de reclamación.



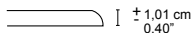
LAND SHOWROOM.

Matter ivory up - Matter ivory down
14,73x118,80 cm - 29.67x118,80 cm

STEPS. PELDAÑOS

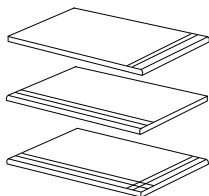
Simple

*

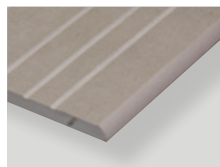
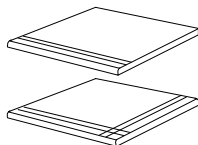


*Standard measures for 30x60 steps.
*Medidas standard para peldaños de 30x60 cm.

30x120 cm - 30x60 cm



60x60 cm

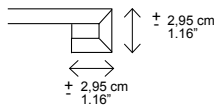


SIMPLE

| | natural | lappato |
|--------------------------------|---------|---------|
| peldaño simple-30 (30x60 cm) | 5171 | 5171 |
| peldaño simple-60 (30x60 cm) | 5171 | 5171 |
| peldaño simple áng(30x60 cm) | 5187 | 5187 |
| peldaño simple-60 (60x60 cm) | 5281 | 5281 |
| peldaño simple áng. (60x60 cm) | 5299 | 5299 |
| peldaño simple 120 (30x120 cm) | 5519 | 5519 |

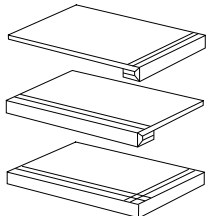
Gradone

*

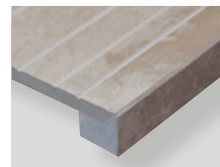
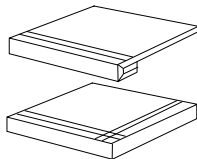


*Standard measures for 30x60 steps.
*Medidas standard para peldaños de 30x60 cm.

30x120 cm - 30x60 cm



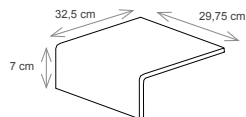
60x60 cm



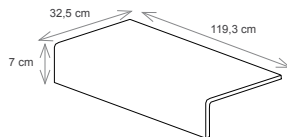
GRADONE

| | natural | lappato |
|------------------------------|---------|---------|
| peldaño grad-30 (30x60 cm) | 5559 | 5559 |
| peldaño grad-60 (30x60 cm) | 5559 | 5559 |
| peldaño grad. áng (30x60 cm) | 5609 | 5609 |
| peldaño grad-60 (60x60 cm) | 5559 | 5559 |
| peldaño grad. áng (60x60 cm) | 5609 | 5609 |
| peldaño grad-120 (30x120 cm) | 5795 | 5795 |
| peldaño grad áng (30x120 cm) | 5815 | 5815 |

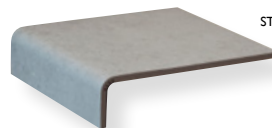
Steps



Step 30x60 cm*



Step 60x120 cm*



STEP

| | natural | lappato |
|---------------------|---------|---------|
| step-60 (30x60 cm) | 5559 | - |
| step 120 (60x120cm) | 5795 | - |

* Upon request. In quantities at least 100 units. Deadline: 60 days.

* For further detail information, please check with our commercial network.

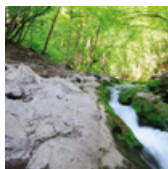
/ Artículo sobre pedido. Cantidad mínima: 100 piezas. Plazo de entrega: 60 días. / Para la obtención de una información detallada consultar a la red comercial.

ECOLOGICAL BALANCE. BILANCIO ECOLOGICO. EQUILIBRIO ECOLÓGICO.

COMPLIANCE WITH CREDITS FOR

LEED

CERTIFICATION SYSTEM



YOU CAN OBTAIN UP TO **38 LEED CREDITS**. SE PUEDEN OBTENER HASTA **38 CRÉDITOS LEED**

depending on the following criteria: dependiendo de los siguientes criterios:

DIRECT CREDITS

SUSTAINABLE SITES:

- SS 1/7** **HEAT ISLAND EFFECT.**
EFECTO ISLA DE CALOR
- SS 3** **LOCAL HEAT ISLAND EFFECT.**
EFECTO ISLA DE CALOR LOCAL

1-2
CREDITS

MATERIALS AND RESOURCES:

- MR** **RECYCLED CONTENT.**
CONTENIDO REICLADO
- MR** **REGIONAL MATERIALS.**
MATERIALES REGIONALES
- MR** **SUSTAINABLE PURCHASING.**
ADQUISICIÓN SOSTENIBLE
- MR** **SUSTAINABLY SOURCED MATERIALS & PRODUCTS.**
PRODUCTOS Y MATERIAS PRIMAS SOSTENIBLES
- MR** **ENVIRONMENTALLY PREFERABLE PRODUCTS.**
PRODUCTOS AMBIENTALMENTE PREFERIBLES

0,5-8
CREDITS

INDOOR ENVIRONMENTAL QUALITY

- IEQ** **LOW EMITTING MATERIALS.**
PRODUCTOS DE BAJA EMISIÓN

1-4
CREDITS

INDIRECT CREDITS

ENERGY & ATMOSPHERE

- EA PR2** **MINIMUM ENERGY PERFORMANCE.**
EFICIENCIA ENERGÉTICA MÍNIMA
- EA CR1** **OPTIMIZE ENERGY PERFORMANCE.**
OPTIMIZACIÓN ENERGÉTICA

1-21
CREDITS

MATERIALS AND RESOURCES

- MR CR1.2** **BUILDING REUSE.**
REUTILIZACIÓN DEL EDIFICIO
- MR CR3** **MATERIALS REUSE.**
REUTILIZACIÓN DE MATERIALES

1-2
CREDITS

INDOOR ENVIRONMENTAL QUALITY

- IEQ CR3** **CONSTRUCTION INDOOR AIR QUALITY MANAGEMENT PLAN.**
PLAN DE GESTIÓN DE LA CALIDAD DE AIRE INTERIOR

1
CREDIT



MATTER & SLIM

www.landporcelanico.com

Ctra. Castellón - San Juan de Moró km 12.5 12130 San Juan de Moró, Castellón, Spain
Tel. 0034 964 70 10 15 Fax Nac. 964 70 00 26. Export. Fax 0034 964 32 83 80 land@landporcelanico.com

