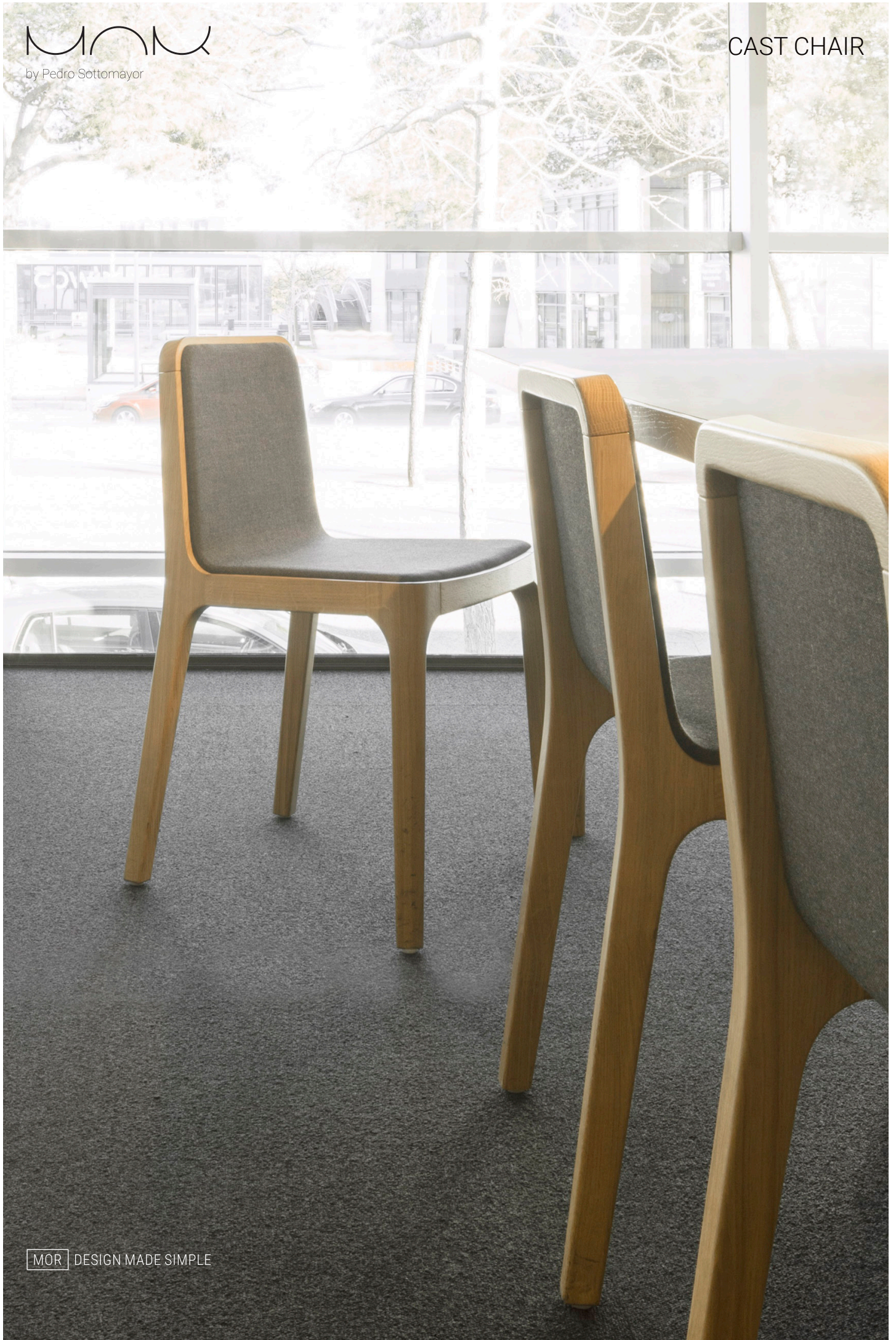
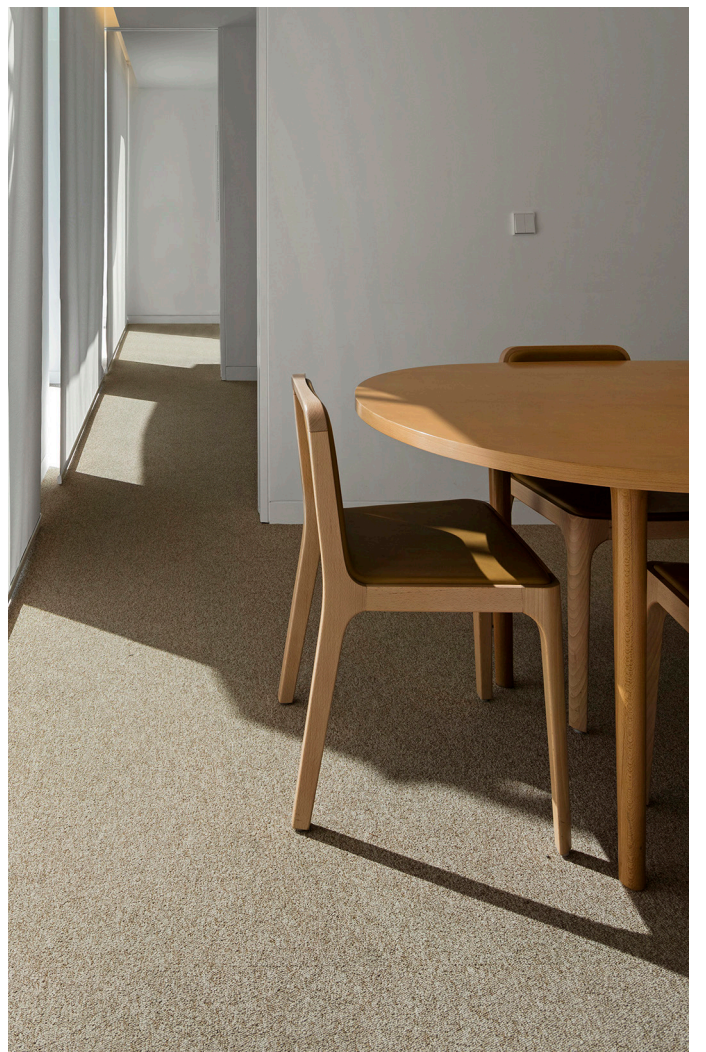


MOR

by Pedro Sottomayor

CAST CHAIR







CAST CHAIR product sheet

The idea was to design a simple and clean chair that can be used at any table, manufactured in solid wood. The CAST chair is a sturdy piece whose structure is ingeniously determined by the seat itself, giving it a classic and versatile look. To be the perfect fit from dining tables to offices.

On request it is possible to customize this product regarding materials or other. Please feel free to ask us any questions you see relevant.

PRODUCT FAMILY

CAST CHAIR

CAST ARMCHAIR

CAST TABLE

VERSIONS

Available in a range of woods, upholstered in fabric or leather.

Mounted with plastic glides or felt glides.

FABRIC / LEATHER REQUIRES

Fabric requires: 0,75 lm

Leather requires: 1,2 m²

See the material catalogue, available on our website.

FINISHINGS

Solid wood impregnated with natural oils and waxes or varnished.

MATERIALS

Frame in solid wood, shell in plywood - available in Beech, Ash, Oak, Walnut.



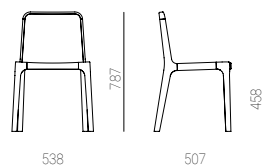
Beech

Ash

Oak

Walnut

chair



armchair

